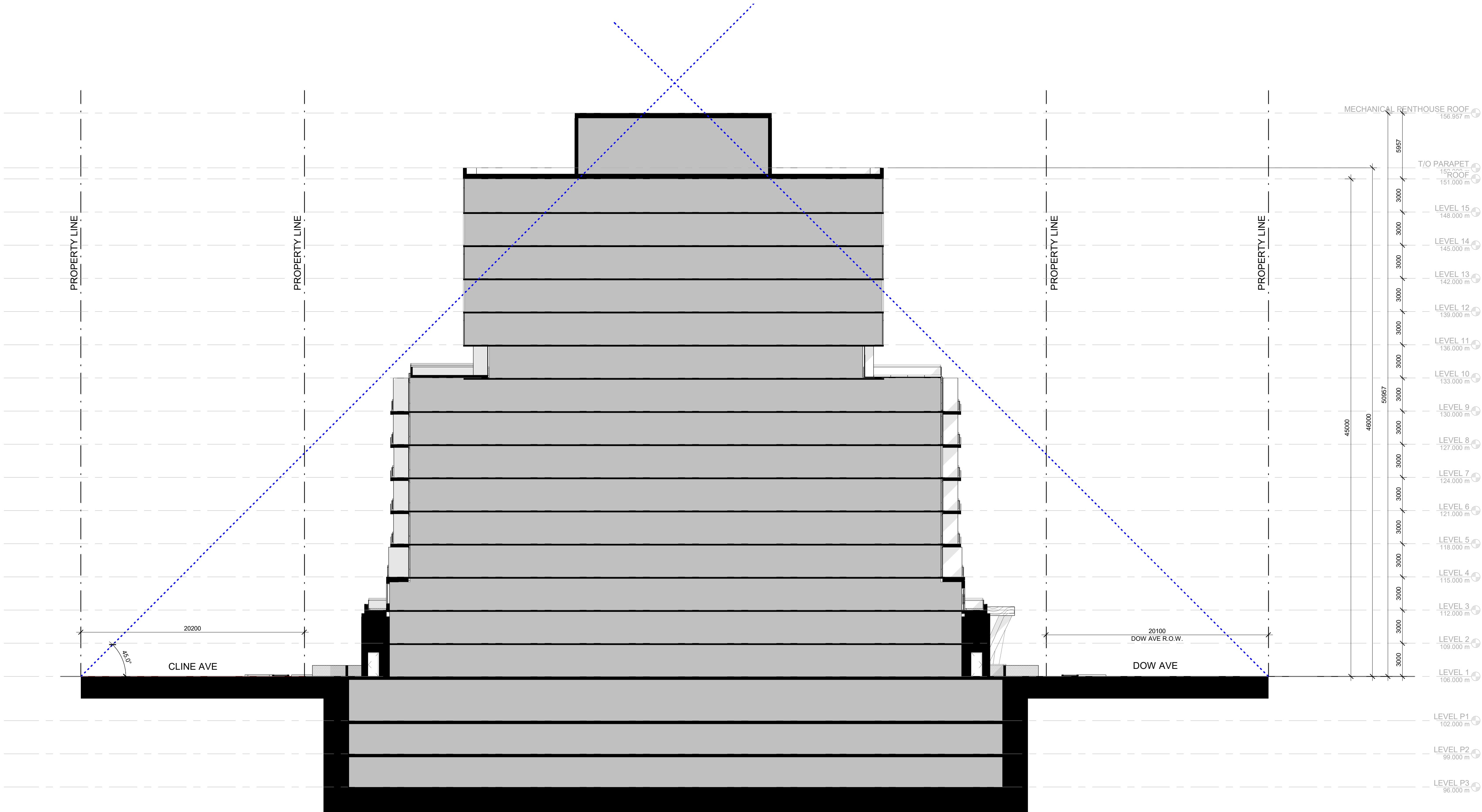


Do not scale drawings. Contractors must check and verify all dimensions and report any discrepancies to the Architect before proceeding with the work. All documents remain the property of the Architect. Unauthorized use, modification, and/or reproduction of these documents is prohibited without written permission. The Contract Documents were prepared by the Consultant for the account of the Owner. The material contained herein reflects the Consultant's best judgement in light of the information available to him at the time of preparation. Any use which a third party makes of the Contract Documents, or any reliance on or decisions to be made based on them are the responsibility of such third parties. The Consultant accepts no responsibility for damages, if any, suffered by any third party as a result of decisions made or actions based on the Contract Documents.

C:\User\myadav\Documents\19052 - 1107 Main St W. Hamilton_Y14_myadav\UG42.rvt

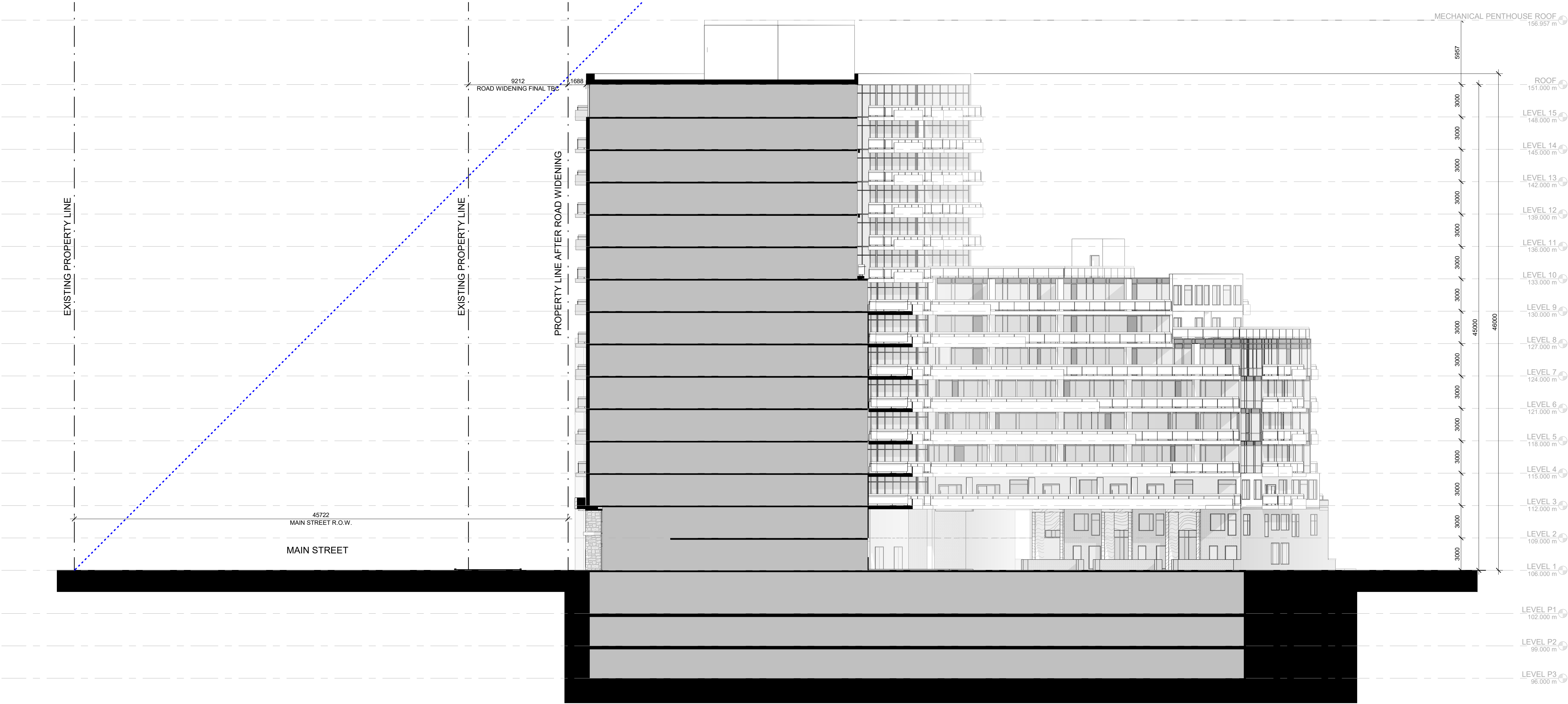
1 CLINE ST & DOW ST ANGULAR PLANE DIAGRAM
1 : 200



Do not scale drawings. Contractors must check and verify all dimensions and report any discrepancies to the Architect before proceeding with the work. All documents remain the property of the Architect. Unauthorised use, modification, and/or reproduction of these documents is prohibited without written permission. The Contract Documents were prepared by the Consultant for the account of the Owner. The material contained herein reflects the Consultant's best judgement in light of the information available to him at the time of preparation. Any use with a third party makes the Consultant accept no responsibility for damages, if any, suffered by any third party as a result of decisions made or actions based on the Contract Documents.

C:\User\myadav\Documents\19052 - 1107 Main st W. Hamilton_Y14_myadav\GH2.rvt

1 MAIN STREET ANGULAR PLANE DIAGRAM
1 : 200



GENERAL NOTES

1. **DO NOT SCALE DRAWINGS.** WRITTEN DIMENSIONS SHALL HAVE PRECEDENCE OVER SCALED DIMENSIONS.
2. ALL WORK SHALL COMPLY WITH THE 2012 ONTARIO BUILDING CODE AND AMENDMENTS.
3. CONTRACTORS MUST CHECK AND VERIFY ALL DIMENSIONS AND SPECIFICATIONS AND REPORT ANY DISCREPANCIES TO THE ARCHITECT BEFORE PROCEEDING WITH THE WORK.
4. ALL CONTRACTORS AND SUB-CONTRACTORS SHALL HAVE A SET OF APPROVED CONSTRUCTION DOCUMENTS ON SITE AT ALL TIMES.
5. ALL DOCUMENTS REMAIN THE PROPERTY OF THE ARCHITECT. UNAUTHORIZED USE, MODIFICATION, AND/OR REPRODUCTION OF THESE DOCUMENTS IS PROHIBITED WITHOUT WRITTEN PERMISSION. THE CONTRACT DOCUMENTS WERE PREPARED BY THE CONSULTANT FOR THE ACCOUNT OF THE OWNER.
6. THE MATERIAL CONTAINED HEREIN REFLECTS THE CONSULTANT'S BEST JUDGEMENT IN LIGHT OF THE INFORMATION AVAILABLE TO HIM AT THE TIME OF PREPARATION. ANY USE WHICH A THIRD PARTY MAKES OF THE CONTRACT DOCUMENTS, OR ANY RELIANCE ON OR DECISIONS TO BE MADE BASED ON THEM ARE THE RESPONSIBILITY OF SUCH THIRD PARTIES.
7. THE CONSULTANT ACCEPTS NO RESPONSIBILITY FOR DAMAGES, IF ANY, SUFFERED BY ANY THIRD PARTY AS A RESULT OF DECISIONS MADE OR ACTIONS BASED ON THE CONTRACT DOCUMENTS.

10	2020-02-11	ISSUED FOR REZONING
No.	Date	Revision

Project No. 19052

Project Date 2020-02-11

Drawn by KMJ

Checked by MYV

Plot Date / Time 2020-02-11 12:09:21 PM

**1107 MAIN ST. W.
HAMILTON**

**MAIN STREET ANGULAR
PLANE DIAGRAM**

EDWARD THOMAS
LICENCE
5572

Drawing Scale 1 : 200

Status

RE-ZONING

Drawing No. Revision No.

A3.6 - r10