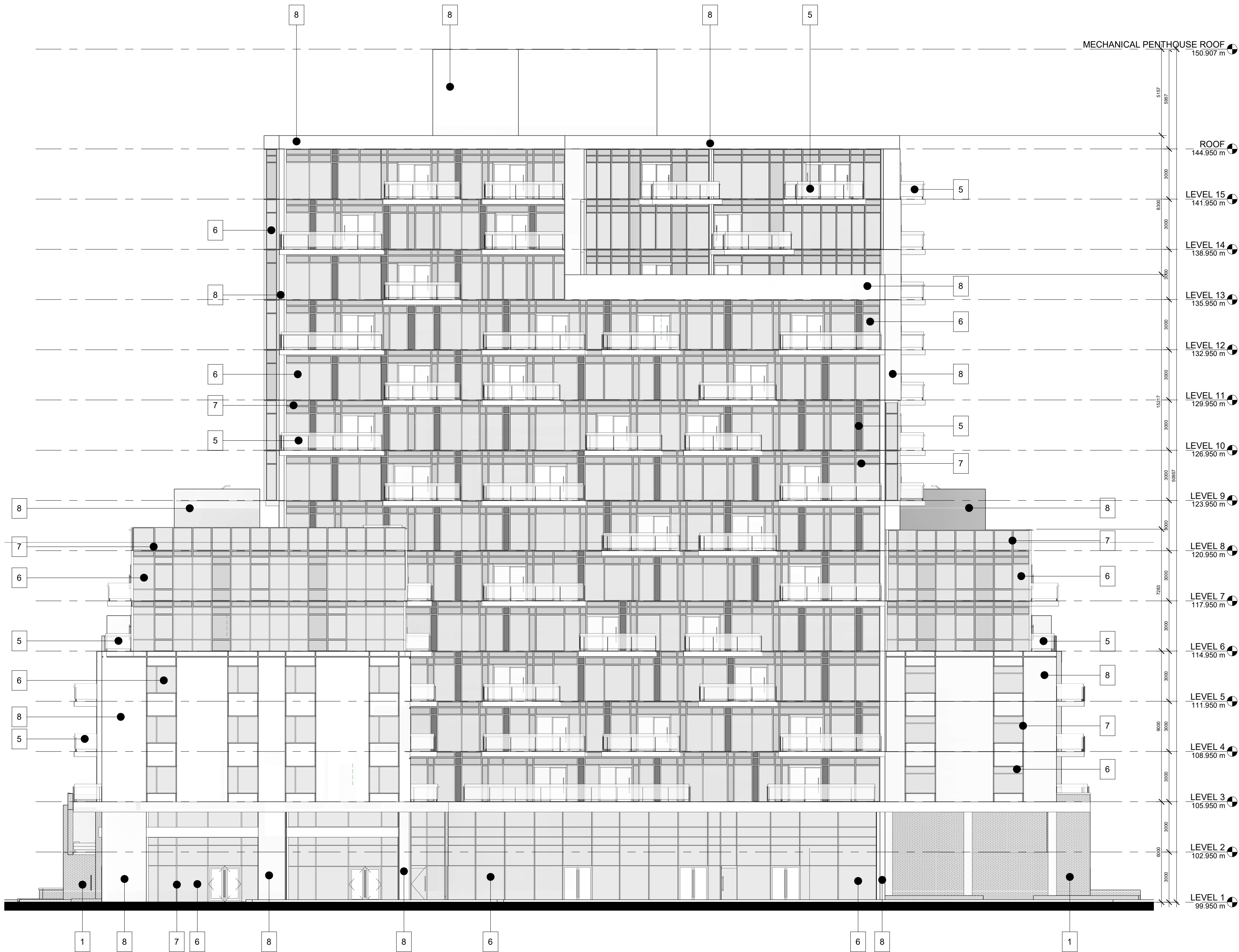


Do not scale drawings. Contractors must check and verify all dimensions and report any discrepancies to the Architect before proceeding with the work. All documents remain the property of the Architect. Unauthorized use, modification, and/or reproduction of these documents is prohibited without written permission. The Contract Documents were prepared by the Consultant for the account of the Owner. The material contained herein reflects the Consultant's best judgment in light of the information available to him at the time of preparation. Any use which a third party makes of the Contract Documents, or any reliance on or decisions to be made based on them are the responsibility of such third parties. The Consultant accepts no responsibility for damages, if any, suffered by any third party as a result of decisions made or actions based on the Contract Documents.

C:\Users\gmcd\Documents\19052 - 1107 Main at W. Hamilton\_V27\_gmcd\MKXA.rvt



**1 NORTH ELEVATION**  
1 : 150

#### MATERIAL LEGEND

1	RED MASONRY
2	PREFINISHED METAL CLAD BALCONY ASSEMBLY A: METAL
3	PREFINISHED METAL CLAD CANOPY ASSEMBLY B: WOOD
4	PATTERNED CONCRETE A: US FORMLINER 2/32 INN
5	SPANDREL PANEL A
6	GLAZING : TINT 2
7	ALUMINUM MULLION
8	PRECAST CONCRETE : WHITE
9	ALUMINUM PANEL
10	STONE CHURCH FAÇADE
11	PRE-CAST CONCRETE
12	SPANDREL PANEL B

#### GENERAL NOTES


1. **DO NOT SCALE DRAWINGS.** WRITTEN DIMENSIONS SHALL HAVE PRECEDENCE OVER SCALED DIMENSIONS.
2. ALL WORK SHALL COMPLY WITH THE 2012 ONTARIO BUILDING CODE AND AMENDMENTS.
3. CONTRACTORS MUST CHECK AND VERIFY ALL DIMENSIONS AND SPECIFICATIONS AND REPORT ANY DISCREPANCIES TO THE ARCHITECT BEFORE PROCEEDING WITH THE WORK.
4. ALL CONTRACTORS AND SUB-CONTRACTORS SHALL HAVE A SET OF APPROVED CONSTRUCTION DOCUMENTS ON SITE AT ALL TIMES.
5. ALL DOCUMENTS REMAIN THE PROPERTY OF THE ARCHITECT. UNAUTHORIZED USE, MODIFICATION, AND/OR REPRODUCTION OF THESE DOCUMENTS IS PROHIBITED WITHOUT WRITTEN PERMISSION. THE CONTRACT DOCUMENTS WERE PREPARED BY THE CONSULTANT FOR THE ACCOUNT OF THE OWNER.
6. THE MATERIAL CONTAINED HEREIN REFLECTS THE CONSULTANT'S BEST JUDGEMENT IN LIGHT OF THE INFORMATION AVAILABLE TO HIM AT THE TIME OF PREPARATION. ANY USE WHICH A THIRD PARTY MAKES OF THE CONTRACT DOCUMENTS, OR ANY RELIANCE ON OR DECISIONS TO BE MADE BASED ON THEM ARE THE RESPONSIBILITY OF SUCH THIRD PARTIES.
7. THE CONSULTANT ACCEPTS NO RESPONSIBILITY FOR DAMAGES, IF ANY, SUFFERED BY ANY THIRD PARTY AS A RESULT OF DECISIONS MADE OR ACTIONS BASED ON THE CONTRACT DOCUMENTS.

21	2021-06-11	RE-ISSUED FOR ZBA
18	2021-04-26	ISSUED FOR COORDINATION
15	2020-12-01	ISSUED FOR OPA/ZBA
14	2020-11-17	ISSUED FOR REZONING
10	2020-02-11	ISSUED FOR REZONING
No.	Date	Revision

<b>srm</b> ARCHITECTS INC.	Project No.	19052
	Project Date	2021-05-27
	Drawn by	KMJ
	Checked by	MYV
	Plot Date / Time	2021-06-10 10:03:50 AM

**1107 MAIN ST. W.  
HAMILTON**

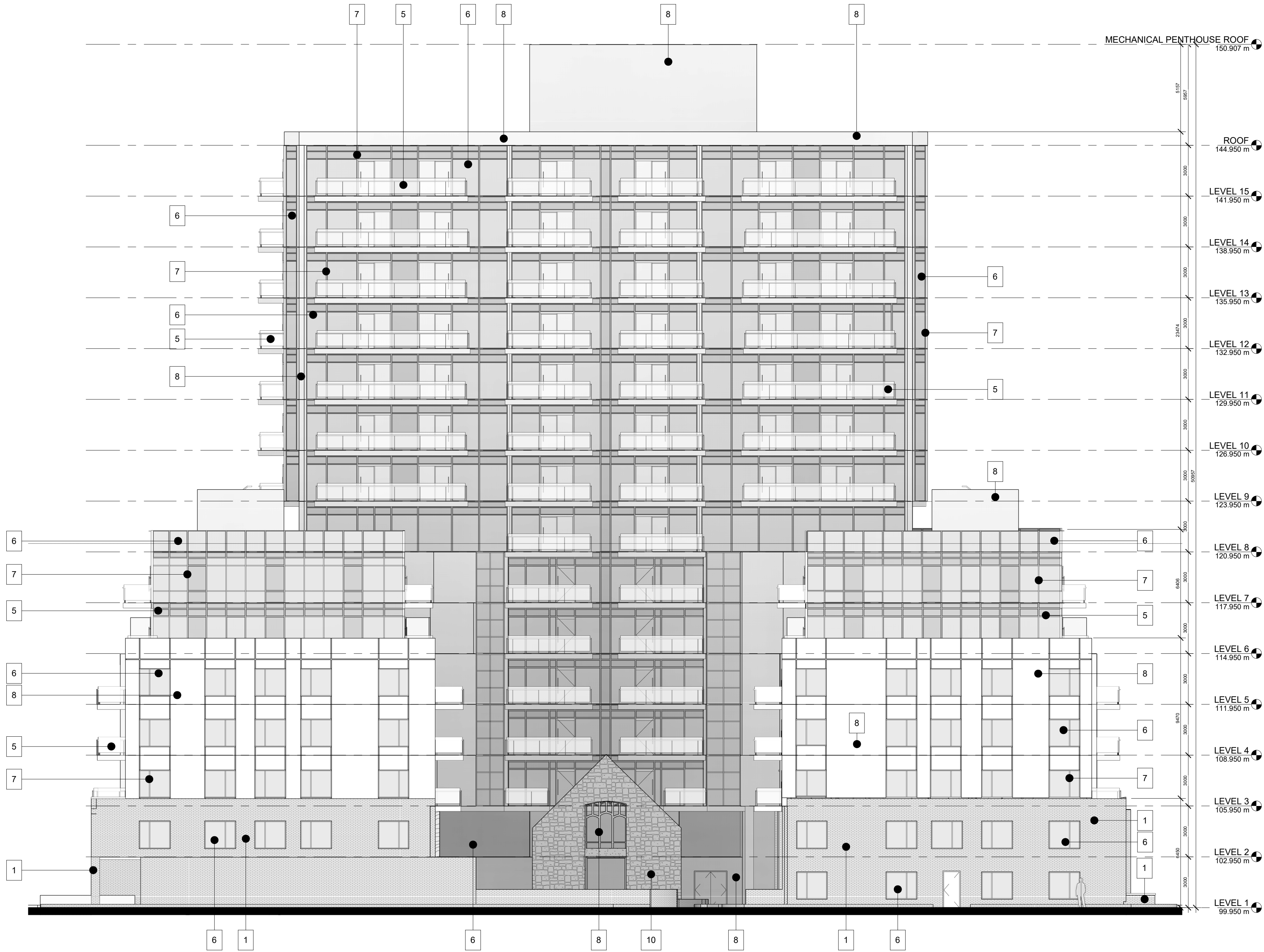
**NORTH ELEVATION**

	Drawing Scale	As indicated
	Status	
	ISSUED FOR REVIEW	
	Drawing No.	Revision No.
	<b>A3.1 - r21</b>	



Do not scale drawings. Contractors must check and verify all dimensions and report any discrepancies to the Architect before proceeding with the work. All documents remain the property of the Architect. Unauthorized use, modification, and/or reproduction of these documents is prohibited without written permission. The Contract Documents were prepared by the Consultant for the account of the Owner. The material contained herein reflects the Consultant's best judgment in light of the information available to him at the time of preparation. Any use which a third party makes of the Contract Documents, or any reliance on or decisions to be made based on them are the responsibility of such third parties. The Consultant accepts no responsibility for damages, if any, suffered by any third party as a result of decisions made or actions based on the Contract Documents.

C:\Users\gmcd\Documents\19052 - 1107 Main at W. Hamilton\_V27\_gmcd\MKXA.rvt



1 SOUTH ELEVATION  
1: 150

#### MATERIAL LEGEND

1	RED MASONRY
2	PREFINISHED METAL CLAD BALCONY ASSEMBLY A: METAL
3	PREFINISHED METAL CLAD CANOPY ASSEMBLY B: WOOD
4	PATTERNED CONCRETE A: US FORMLINER 2/32 INN
5	SPANDREL PANEL A
6	GLAZING : TINT 2
7	ALUMINUM MULLION
8	PRECAST CONCRETE : WHITE
9	ALUMINUM PANEL
10	STONE CHURCH FAÇADE
11	PRE-CAST CONCRETE
12	SPANDREL PANEL B

#### GENERAL NOTES

1. DO NOT SCALE DRAWINGS. WRITTEN DIMENSIONS SHALL HAVE PRECEDENCE OVER SCALED DIMENSIONS.
2. ALL WORK SHALL COMPLY WITH THE 2012 ONTARIO BUILDING CODE AND AMENDMENTS.
3. CONTRACTORS MUST CHECK AND VERIFY ALL DIMENSIONS AND SPECIFICATIONS AND REPORT ANY DISCREPANCIES TO THE ARCHITECT BEFORE PROCEEDING WITH THE WORK.
4. ALL CONTRACTORS AND SUB-CONTRACTORS SHALL HAVE A SET OF APPROVED CONSTRUCTION DOCUMENTS ON SITE AT ALL TIMES.
5. ALL DOCUMENTS REMAIN THE PROPERTY OF THE ARCHITECT. UNAUTHORIZED USE, MODIFICATION, AND/OR REPRODUCTION OF THESE DOCUMENTS IS PROHIBITED WITHOUT WRITTEN PERMISSION. THE CONTRACT DOCUMENTS WERE PREPARED BY THE CONSULTANT FOR THE ACCOUNT OF THE OWNER.
6. THE MATERIAL CONTAINED HEREIN REFLECTS THE CONSULTANT'S BEST JUDGEMENT IN LIGHT OF THE INFORMATION AVAILABLE TO HIM AT THE TIME OF PREPARATION. ANY USE WHICH A THIRD PARTY MAKES OF THE CONTRACT DOCUMENTS, OR ANY RELIANCE ON OR DECISIONS TO BE MADE BASED ON THEM ARE THE RESPONSIBILITY OF SUCH THIRD PARTIES.
7. THE CONSULTANT ACCEPTS NO RESPONSIBILITY FOR DAMAGES, IF ANY, SUFFERED BY ANY THIRD PARTY AS A RESULT OF DECISIONS MADE OR ACTIONS BASED ON THE CONTRACT DOCUMENTS.

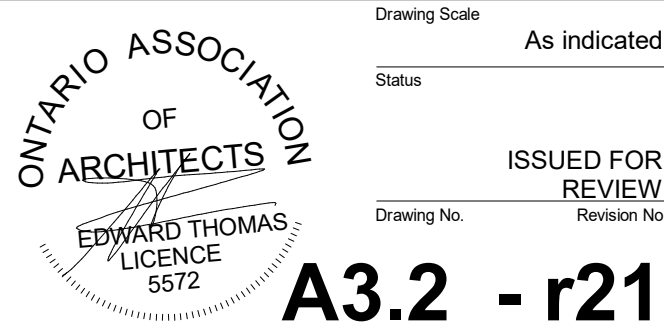
21	2021-06-11	RE-ISSUED FOR ZBA
18	2021-04-26	ISSUED FOR COORDINATION
15	2020-12-01	ISSUED FOR OPA/ZBA
14	2020-11-17	ISSUED FOR REZONING
10	2020-02-11	ISSUED FOR REZONING
No.	Date	Revision



Project No.	19052
Project Date	2021-05-27
Drawn by	KMJ
Checked by	MYV
Plot Date / Time	2021-06-10 10:05:01 AM

1107 MAIN ST. W.  
HAMILTON

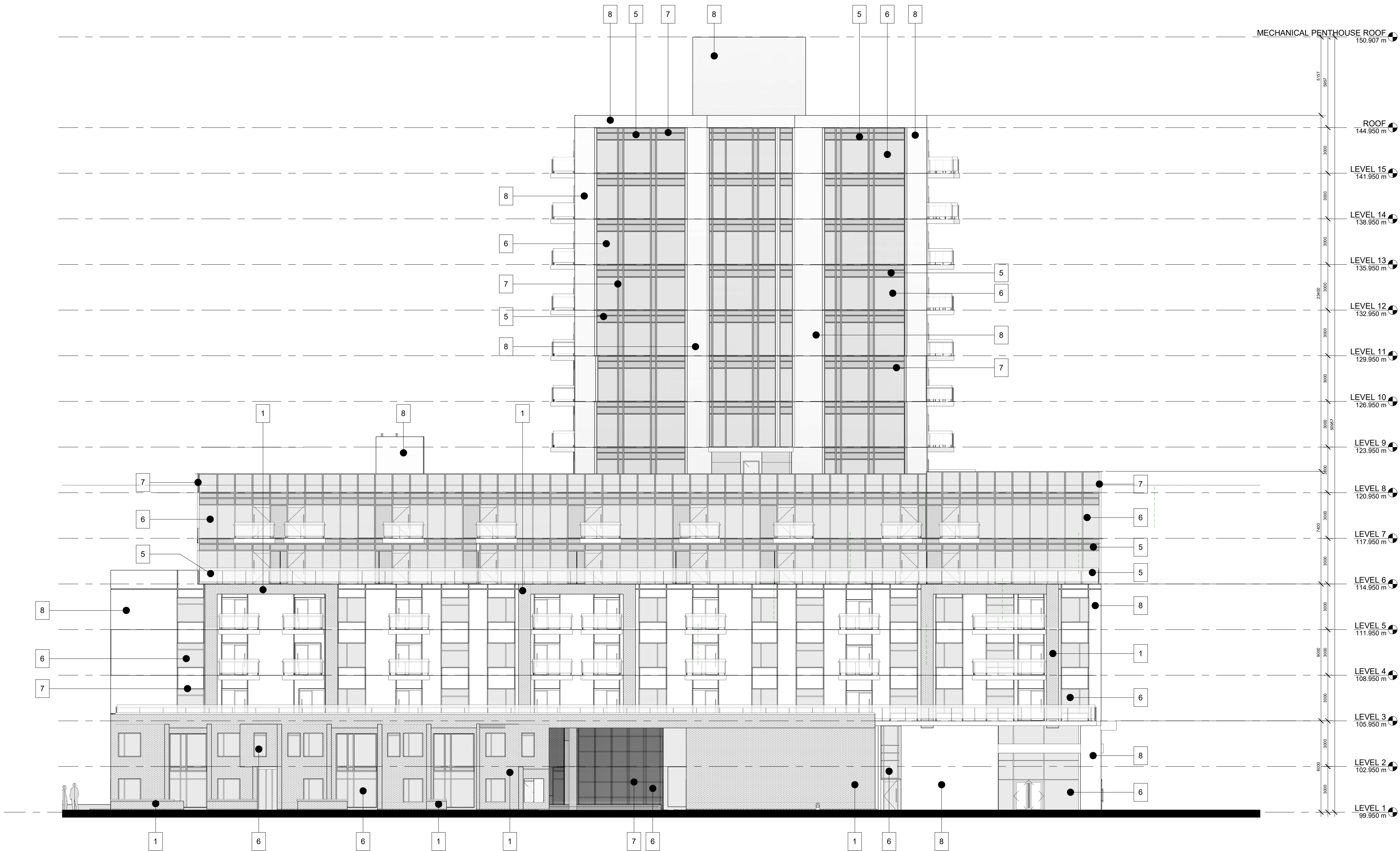
SOUTH ELEVATION





Do not scale drawings. Contractors must check and verify all dimensions and report any discrepancies to the Architect before proceeding with the work. All documents remain the property of the Architect. Unauthorized use, modification, and/or reproduction of these documents is prohibited without written permission. The Contract Documents were prepared by the Consultant for the account of the Owner. The material contained herein reflects the Consultant's best judgment in light of the information available to him at the time of preparation. Any use which a third party makes of the Contract Documents, or any reliance on or decisions based on them are the responsibility of such third parties. The Consultant accepts no responsibility for damages, if any, suffered by any third party as a result of decisions made or actions based on the Contract Documents.

C:\Users\gmdecd\Documents\19052 - 1107 Main at W. Hamilton\_V27\_gmdecdMKXA.rvt



#### MATERIAL LEGEND

1	RED MASONRY
2	PREFINISHED METAL CLAD BALCONY ASSEMBLY A: METAL
3	PREFINISHED METAL CLAD CANOPY ASSEMBLY B: WOOD
4	PATTERNED CONCRETE A: US FORMLINER 2/32 INN
5	SPANDREL PANEL A
6	GLAZING : TINT 2
7	ALUMINUM MULLION
8	PRECAST CONCRETE : WHITE
9	ALUMINUM PANEL
10	STONE CHURCH FAÇADE
11	PRE-CAST CONCRETE
12	SPANDREL PANEL B

#### GENERAL NOTES

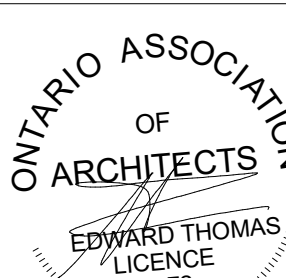
1. DO NOT SCALE DRAWINGS. WRITTEN DIMENSIONS SHALL HAVE PRECEDENCE OVER SCALED DIMENSIONS.
2. ALL WORK SHALL COMPLY WITH THE 2012 ONTARIO BUILDING CODE AND AMENDMENTS.
3. CONTRACTORS MUST CHECK AND VERIFY ALL DIMENSIONS AND SPECIFICATIONS AND REPORT ANY DISCREPANCIES TO THE ARCHITECT BEFORE PROCEEDING WITH THE WORK.
4. ALL CONTRACTORS AND SUB-CONTRACTORS SHALL HAVE A SET OF APPROVED CONSTRUCTION DOCUMENTS ON SITE AT ALL TIMES.
5. ALL DOCUMENTS REMAIN THE PROPERTY OF THE ARCHITECT. UNAUTHORIZED USE, MODIFICATION, AND/OR REPRODUCTION OF THESE DOCUMENTS IS PROHIBITED WITHOUT WRITTEN PERMISSION. THE CONTRACT DOCUMENTS WERE PREPARED BY THE CONSULTANT FOR THE ACCOUNT OF THE OWNER.
6. THE MATERIAL CONTAINED HEREIN REFLECTS THE CONSULTANT'S BEST JUDGEMENT IN LIGHT OF THE INFORMATION AVAILABLE TO HIM AT THE TIME OF PREPARATION. ANY USE WHICH A THIRD PARTY MAKES OF THE CONTRACT DOCUMENTS, OR ANY RELIANCE ON OR DECISIONS TO BE MADE BASED ON THEM ARE THE RESPONSIBILITY OF SUCH THIRD PARTIES.
7. THE CONSULTANT ACCEPTS NO RESPONSIBILITY FOR DAMAGES, IF ANY, SUFFERED BY ANY THIRD PARTY AS A RESULT OF DECISIONS MADE OR ACTIONS BASED ON THE CONTRACT DOCUMENTS.

21	2021-06-11	RE-ISSUED FOR ZBA
18	2021-04-26	ISSUED FOR COORDINATION
15	2020-12-01	ISSUED FOR OPA/ZBA
14	2020-11-17	ISSUED FOR REZONING
10	2020-02-11	ISSUED FOR REZONING
No.	Date	Revision

	Project No.	19052
	Project Date	2021-05-27
	Drawn by	KMJ
	Checked by	MYV
	Plot Date / Time	2021-06-10 10:06:18 AM

1107 MAIN ST. W.  
HAMILTON

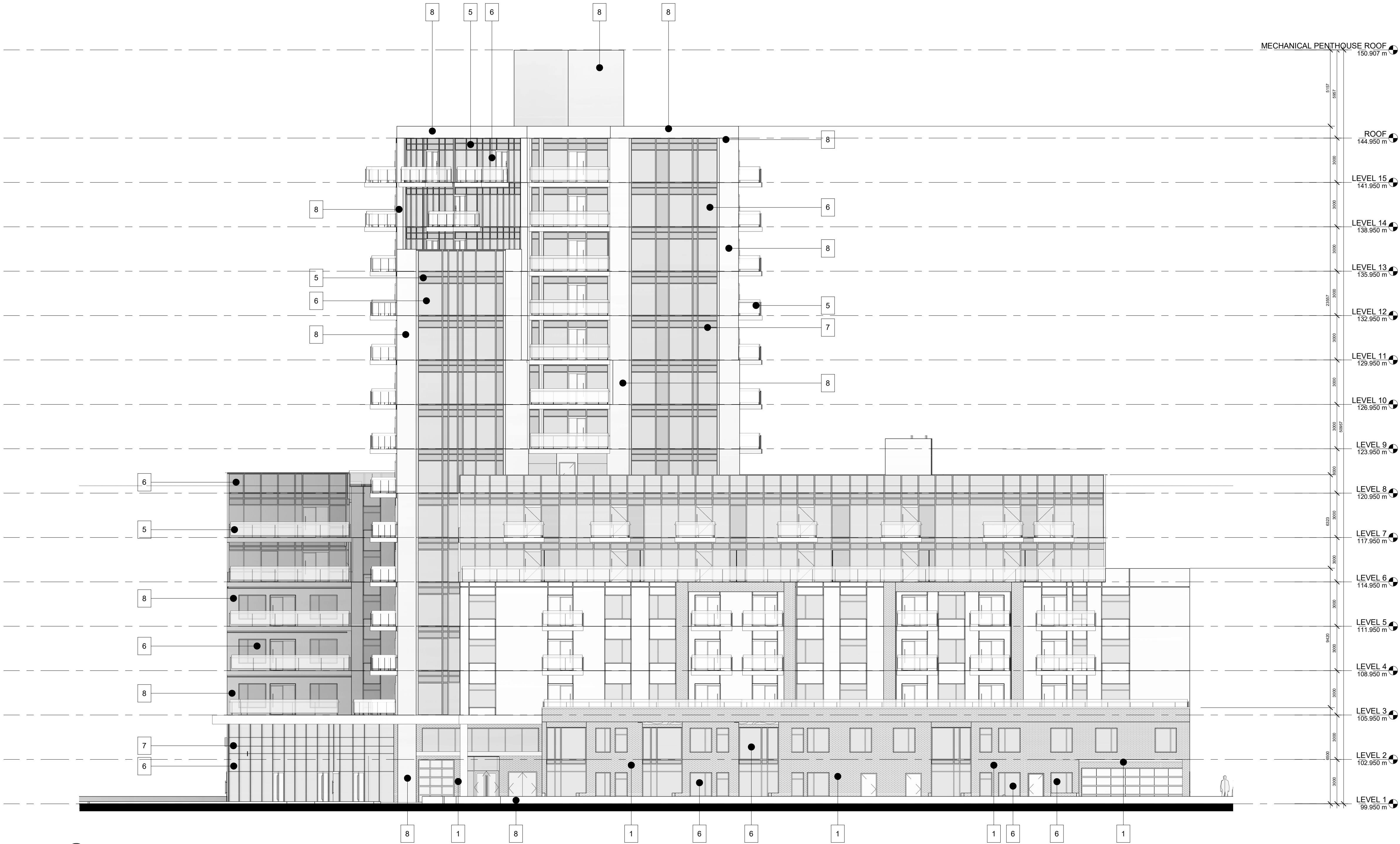
EAST ELEVATION

	Drawing Scale	As indicated
	Status	
	ISSUED FOR REVIEW	
	Revision No.	
EDWARD THOMAS LICENCE 5572		
A3.3 - r21		



Do not scale drawings. Contractors must check and verify all dimensions and report any discrepancies to the Architect before proceeding with the work. All documents remain the property of the Architect. Unauthorized use, modification, and/or reproduction of these documents is prohibited without written permission. The Contract Documents were prepared by the Consultant for the account of the Owner. The material contained herein reflects the Consultant's best judgment in light of the information available to him at the time of preparation. Any use which a third party makes of the Contract Documents, or any reliance on or decisions to be made based on them are the responsibility of such third parties. The Consultant accepts no responsibility for damages, if any, suffered by any third party as a result of decisions made or actions based on the Contract Documents.

C:\Users\gmd\OneDrive\Documents\19052 - 1107 Main at W. Hamilton\_V27\_gm\doc\MKX7A.rvt



1 WEST ELEVATION  
1 : 150

MATERIAL LEGEND

1	RED MASONRY
2	PREFINISHED METAL CLAD BALCONY ASSEMBLY A: METAL
3	PREFINISHED METAL CLAD CANOPY ASSEMBLY B: WOOD
4	PATTERNED CONCRETE A: US FORMLINER 2/32 INN
5	SPANDREL PANEL A
6	GLAZING : TINT 2
7	ALUMINUM MULLION
8	PRECAST CONCRETE : WHITE
9	ALUMINUM PANEL
10	STONE CHURCH FAÇADE
11	PRE-CAST CONCRETE
12	SPANDREL PANEL B

GENERAL NOTES

1. DO NOT SCALE DRAWINGS. WRITTEN DIMENSIONS SHALL HAVE PRECEDENCE OVER SCALED DIMENSIONS.
2. ALL WORK SHALL COMPLY WITH THE 2012 ONTARIO BUILDING CODE AND AMENDMENTS.
3. CONTRACTORS MUST CHECK AND VERIFY ALL DIMENSIONS AND SPECIFICATIONS AND REPORT ANY DISCREPANCIES TO THE ARCHITECT BEFORE PROCEEDING WITH THE WORK.
4. ALL CONTRACTORS AND SUB-CONTRACTORS SHALL HAVE A SET OF APPROVED CONSTRUCTION DOCUMENTS ON SITE AT ALL TIMES.
5. ALL DOCUMENTS REMAIN THE PROPERTY OF THE ARCHITECT. UNAUTHORIZED USE, MODIFICATION, AND/OR REPRODUCTION OF THESE DOCUMENTS IS PROHIBITED WITHOUT WRITTEN PERMISSION. THE CONTRACT DOCUMENTS WERE PREPARED BY THE CONSULTANT FOR THE ACCOUNT OF THE OWNER.
6. THE MATERIAL CONTAINED HEREIN REFLECTS THE CONSULTANT'S BEST JUDGEMENT IN LIGHT OF THE INFORMATION AVAILABLE TO HIM AT THE TIME OF PREPARATION. ANY USE WHICH A THIRD PARTY MAKES OF THE CONTRACT DOCUMENTS, OR ANY RELIANCE ON OR DECISIONS TO BE MADE BASED ON THEM ARE THE RESPONSIBILITY OF SUCH THIRD PARTIES.
7. THE CONSULTANT ACCEPTS NO RESPONSIBILITY FOR DAMAGES, IF ANY, SUFFERED BY ANY THIRD PARTY AS A RESULT OF DECISIONS MADE OR ACTIONS BASED ON THE CONTRACT DOCUMENTS.

21	2021-06-11	RE-ISSUED FOR ZBA
18	2021-04-26	ISSUED FOR COORDINATION
15	2020-12-01	ISSUED FOR OPA/ZBA
14	2020-11-17	ISSUED FOR REZONING
10	2020-02-11	ISSUED FOR REZONING
No.	Date	Revision



Project No	19052
Project Date	2021-05-27
Drawn by	KMJ
Checked by	MYV
Plot Date / Time	2021-06-10 10:07:37 AM

1107 MAIN ST. W.  
HAMILTON

WEST ELEVATION

ONTARIO ASSOCIATION  
OF  
ARCHITECTS

EDWARD THOMAS  
LICENCE  
5572

Drawing Scale  
As indicated

Status

Drawing No.  
Revision No.

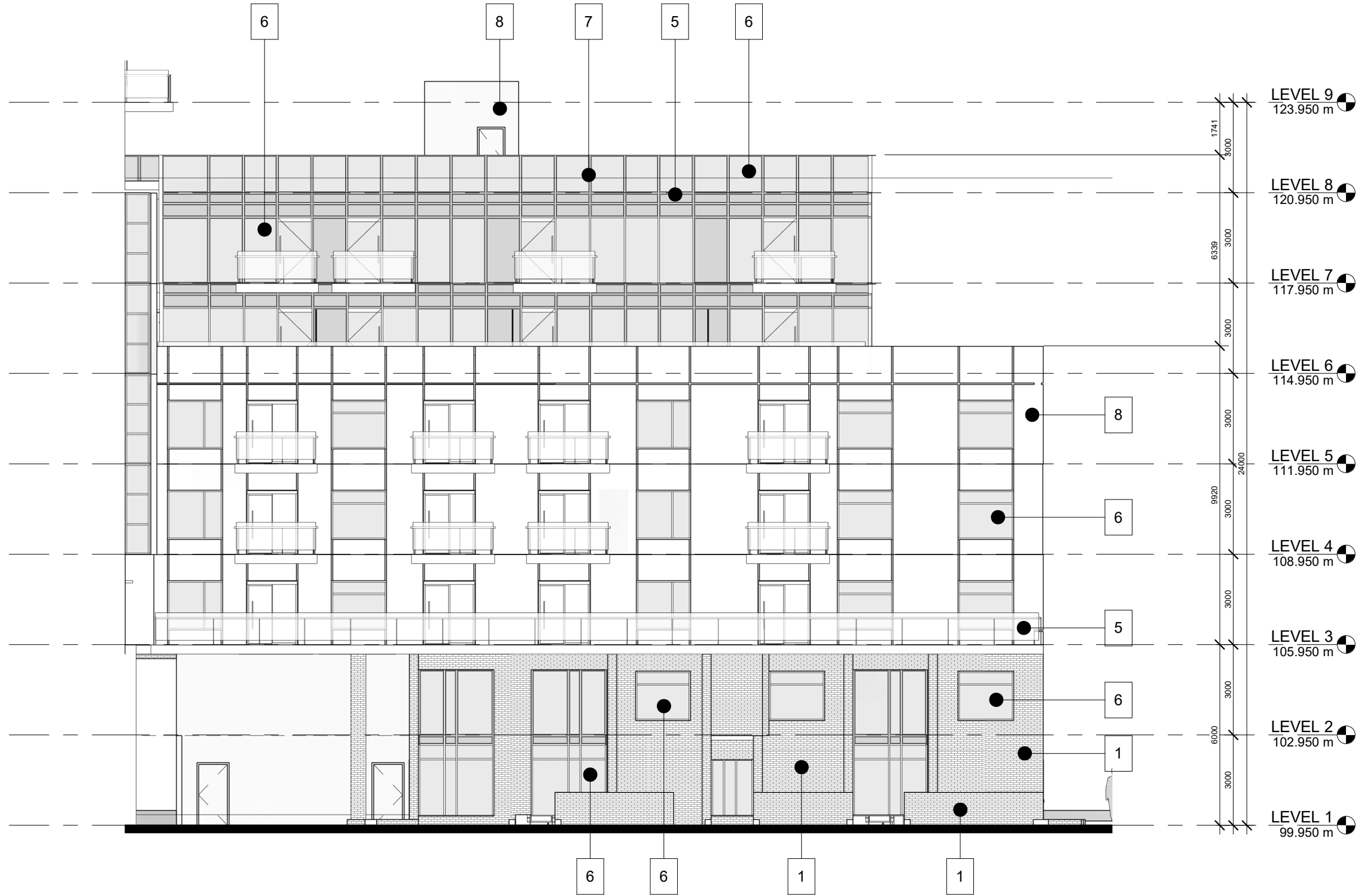
ISSUED FOR  
REVIEW

A3.4 - r21

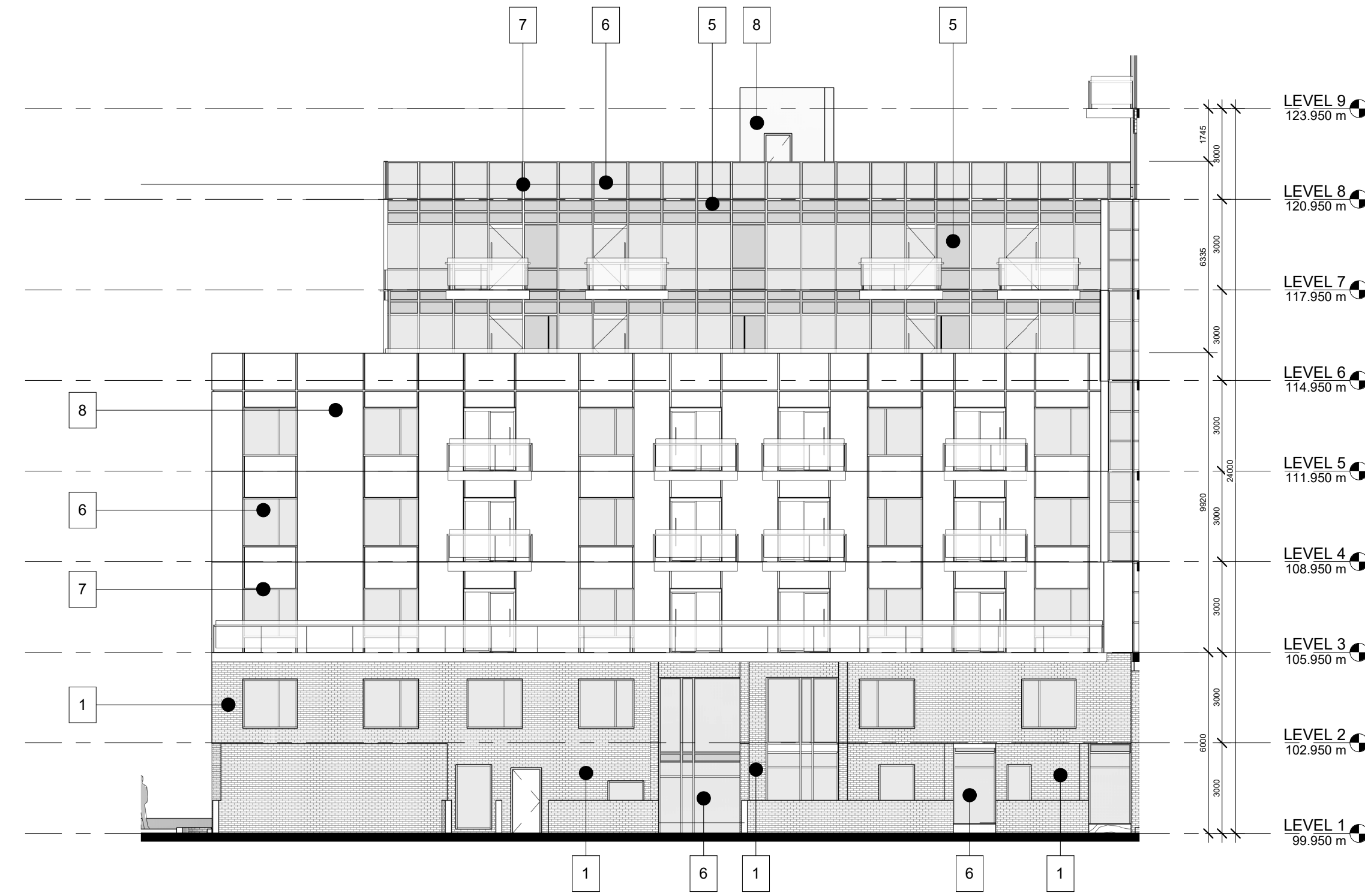


Do not scale drawings. Contractors must check and verify all dimensions and report any discrepancies to the Architect before proceeding with the work. All documents remain the property of the Architect. Unauthorized use, modification, and/or reproduction of these documents is prohibited without written permission. The Contract Documents were prepared by the Consultant for the account of the Owner. The material contained herein reflects the Consultant's best judgement in light of the information available to him at the time of preparation. Any use with a third party makes the Consultant accept no responsibility for damages, if any, suffered by any third party as a result of decisions made or actions based on the Contract Documents. The Consultant accepts no responsibility for damages, if any, suffered by any third party as a result of decisions made or actions based on the Contract Documents.

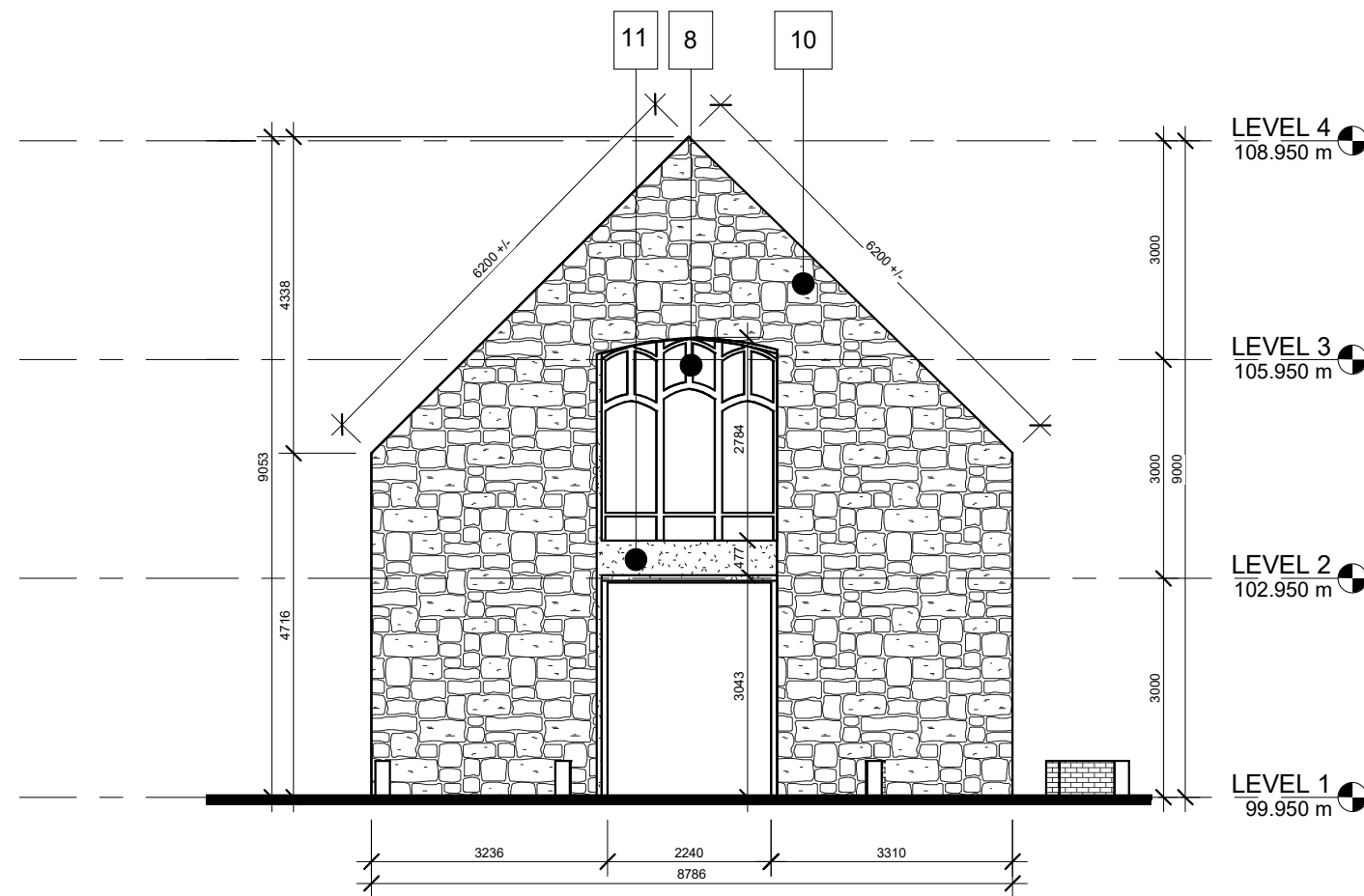
C:\Users\gmd\OneDrive\Documents\19052 - 1107 Main at W. Hamilton\_V27\_gm\doc\MKX7A.rvt



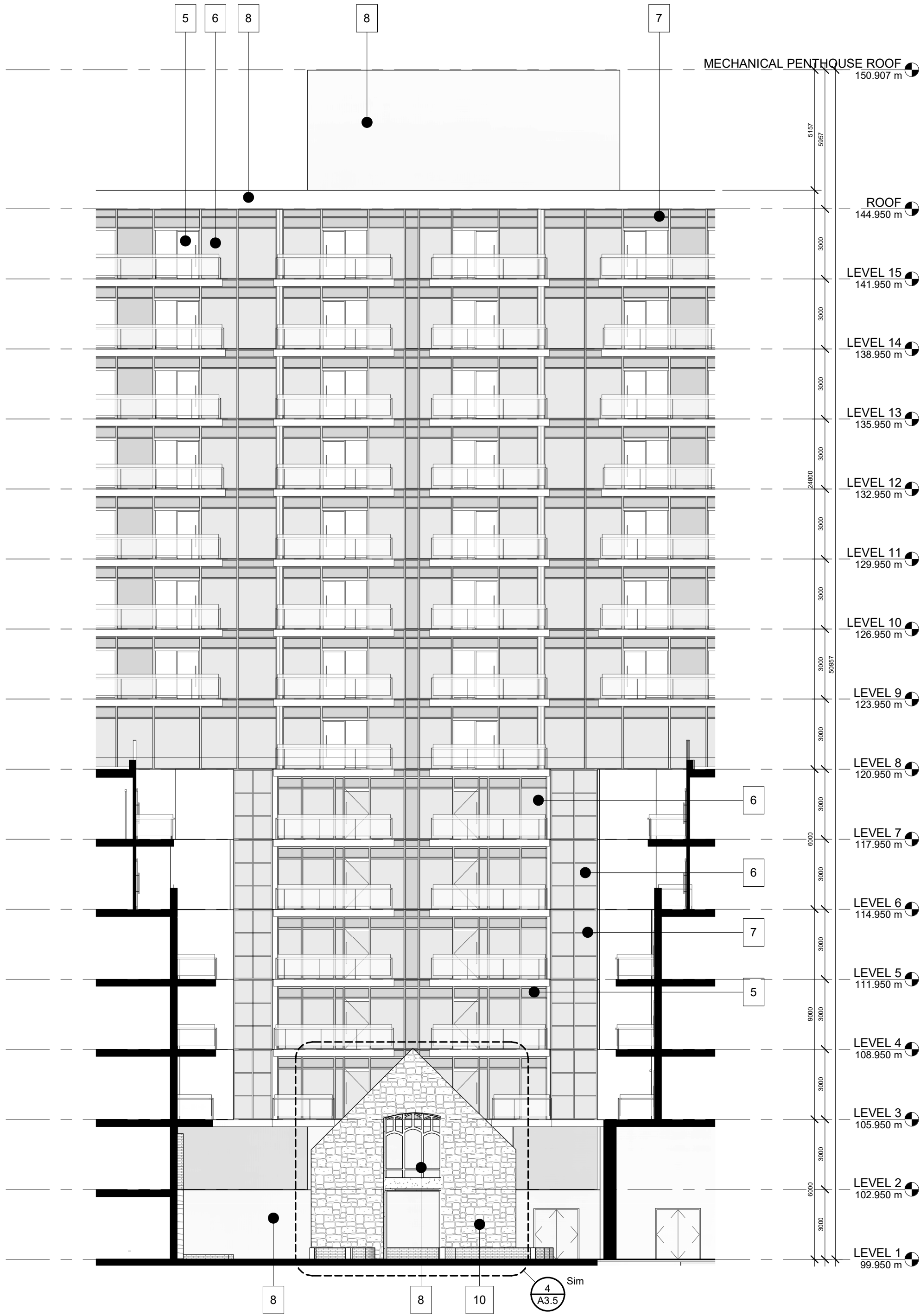
1 COURTYARD ELEVATION EAST WING  
1 : 150



2 COURTYARD ELEVATION WEST WING  
1 : 150



4 ENLARGED HERITAGE WALL ELEVATION  
1 : 100



3 COURTYARD ELEVATION NORTH  
1 : 150

#### MATERIAL LEGEND

1	RED MASONRY
2	PREFINISHED METAL CLAD BALCONY ASSEMBLY A: METAL
3	PREFINISHED METAL CLAD CANOPY ASSEMBLY B: WOOD
4	PATTERNED CONCRETE A: US FORMLINER 2/32 INN
5	SPANDREL PANEL A
6	GLAZING : TINT 2
7	ALUMINUM MULLION
8	PRECAST CONCRETE : WHITE
9	ALUMINUM PANEL
10	STONE CHURCH FAÇADE
11	PRE-CAST CONCRETE
12	SPANDREL PANEL B

#### GENERAL NOTES

1. DO NOT SCALE DRAWINGS. WRITTEN DIMENSIONS SHALL HAVE PRECEDENCE OVER SCALED DIMENSIONS.
2. ALL WORK SHALL COMPLY WITH THE 2012 ONTARIO BUILDING CODE AND AMENDMENTS.
3. CONTRACTORS MUST CHECK AND VERIFY ALL DIMENSIONS AND SPECIFICATIONS AND REPORT ANY DISCREPANCIES TO THE ARCHITECT BEFORE PROCEEDING WITH THE WORK.
4. ALL CONTRACTORS AND SUB-CONTRACTORS SHALL HAVE A SET OF APPROVED CONSTRUCTION DOCUMENTS ON SITE AT ALL TIMES.
5. ALL DOCUMENTS REMAIN THE PROPERTY OF THE ARCHITECT. UNAUTHORIZED USE, MODIFICATION, AND/OR REPRODUCTION OF THESE DOCUMENTS IS PROHIBITED WITHOUT WRITTEN PERMISSION. THE CONTRACT DOCUMENTS WERE PREPARED BY THE CONSULTANT FOR THE ACCOUNT OF THE OWNER.
6. THE MATERIAL CONTAINED HEREIN REFLECTS THE CONSULTANT'S BEST JUDGEMENT IN LIGHT OF THE INFORMATION AVAILABLE TO HIM AT THE TIME OF PREPARATION. ANY USE WHICH A THIRD PARTY MAKES OF THE CONTRACT DOCUMENTS, OR ANY RELIANCE ON OR DECISIONS TO BE MADE BASED ON THEM ARE THE RESPONSIBILITY OF SUCH THIRD PARTIES.
7. THE CONSULTANT ACCEPTS NO RESPONSIBILITY FOR DAMAGES, IF ANY, SUFFERED BY ANY THIRD PARTY AS A RESULT OF DECISIONS MADE OR ACTIONS BASED ON THE CONTRACT DOCUMENTS.

21	2021-06-11	RE-ISSUED FOR ZBA
18	2021-04-26	ISSUED FOR COORDINATION
No.	Date	Revision

<b>srm</b> ARCHITECTS INC.	Project No.	19052
	Project Date	2021-05-27
	Drawn by	DM
	Checked by	MES
	Plot Date / Time	2021-06-10 10:08:04 AM

1107 MAIN ST. W.  
HAMILTON

COURTYARD  
ELEVATIONS

<b>ONTARIO ASSOCIATION OF ARCHITECTS</b> EDWARD THOMAS LICENCE 5572	Drawing Scale	As indicated
	Status	
	ISSUED FOR REVIEW	
	Drawing No.	Revision No.
	<b>A3.5 - r21</b>	