

City Contact:

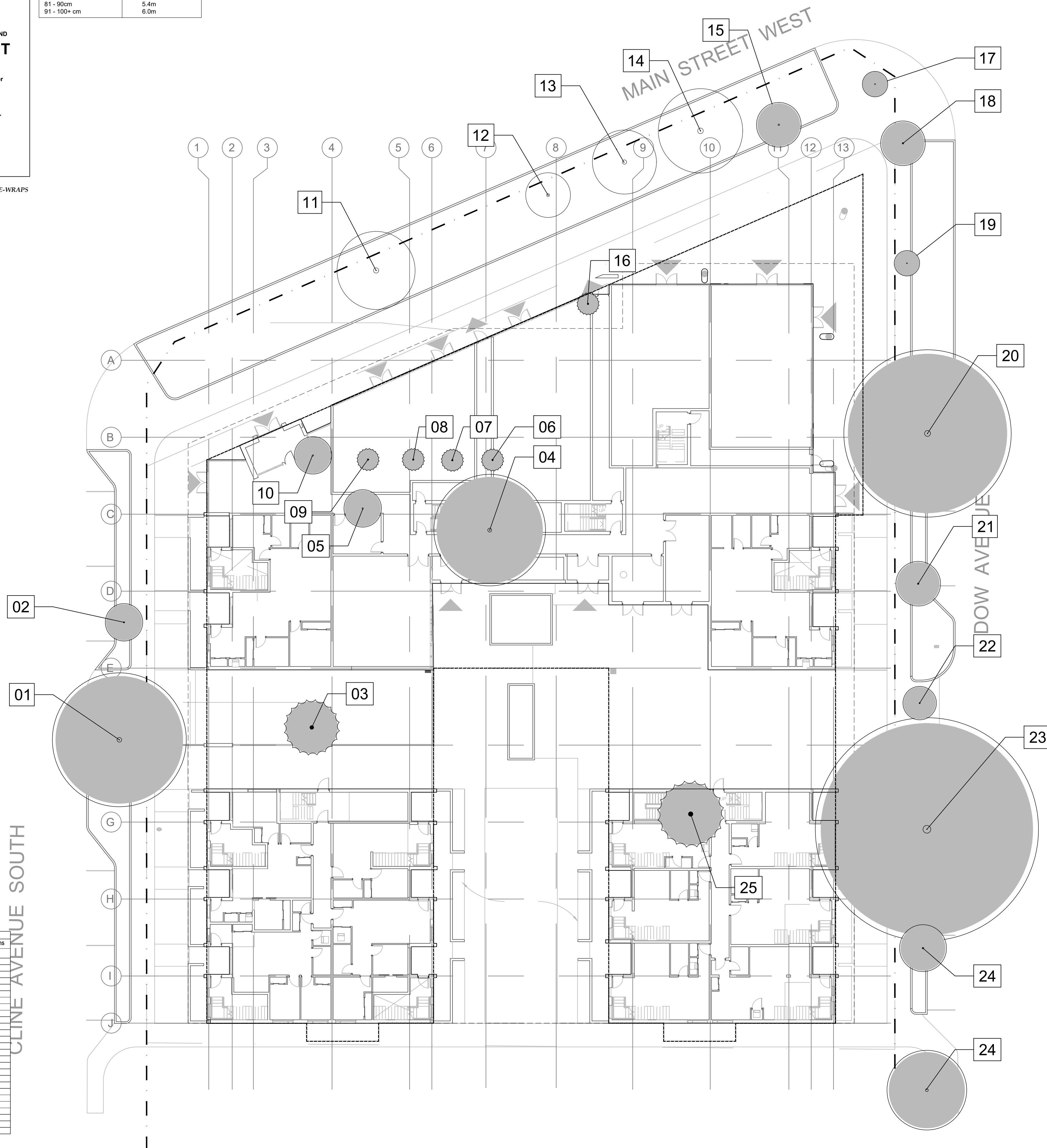
SIGN TO BE PLACED 45M O.C. ALONG FENCE
SECURED WITH OUTDOOR PLASTIC LOCKING TIE-WRAPS

TREE PROTECTION ZONE	
TRUNK DIAMETER (DBH)	MINIMUM PROTECTION DISTANCES REQUIRED
<10cm	1.8m
11 - 40cm	2.4m
41 - 50cm	3.0m
51 - 60cm	3.6m
61 - 70cm	4.2m
71 - 80cm	4.8m
81 - 90cm	5.4m
91 - 100+ cm	6.0m

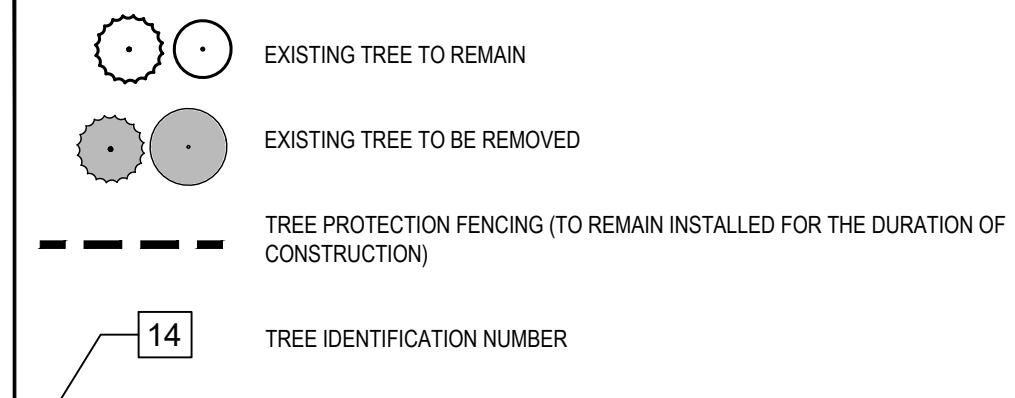
TREE MANAGEMENT NOTES - HAMILTON

1. THE PREPARATION OF THE TREE PRESERVATION PLAN HAS BEEN COORDINATED WITH THE PREPARATION OF THE GRADING CONTROL PLAN AND EROSION & SEDIMENT CONTROL PLAN. THE PLANS HAVE BEEN REVIEWED BY THE LANDSCAPE ARCHITECT AND ENGINEERING CONSULTANTS. THE RELEVANT FEATURES OF THESE PLANS ARE IN CONFORMITY WITH EACH OTHER.
2. NO SERVICING, GRADING OR OTHER CONSTRUCTION ACTIVITY IS TO BEGIN UNTIL THE INSTALLATION OF THE TREE PROTECTION FENCING AND ANY OTHER PROTECTION MEASURES HAVE BEEN CERTIFIED BY THE LANDSCAPE ARCHITECT. PROTECTION FENCING SHALL NOT BE ALTERED OR RELOCATED UNLESS AUTHORIZED IN WRITING BY THE LANDSCAPE ARCHITECT.
3. IT IS THE RESPONSIBILITY OF THE CONTRACTOR TO ENSURE THAT THEY ARE AWARE OF ALL MEASURES BEING TAKEN TO PROTECT ALL TREES IDENTIFIED.
4. BEFORE THE START OF ANY WORK, THE CONTRACTOR, SITE INSPECTOR AND LANDSCAPE ARCHITECT WILL MEET ON SITE TO REVIEW ALL TREE PROTECTION MEASURES REQUIRED TO PROTECT TREES.
5. ALL TREES TO BE SAVED SHALL BE FULLY PROTECTED WITH PROTECTIVE FENCING INSTALLED TO DEFER THE LOCATION SHOWN ON THE PLAN AND DETAIL. FENCING LOCATION TO BE APPROVED UPON INSTALLATION BY THE LANDSCAPE ARCHITECT, WHO THEN IN TURN PROVIDES A VERIFICATION LETTER TO THE DIRECTOR OF PLANNING TO CONFIRM THAT ALL TREE PROTECTION MEASURES HAVE BEEN INSTALLED AS SHOWN IN THE TREE PRESERVATION PLAN AS APPROVED BY THE CITY OF HAMILTON. TREE PROTECTION SHALL REMAIN IN PLACE UNTIL FINISH LANDSCAPING.
6. ALL DAMAGE TO TREES WILL BE REPORTED TO THE CONSULTANT IMMEDIATELY BY THE CONTRACTOR'S FOREPERSON.
7. THE VERIFICATION OF TREE PROTECTION LETTER MUST BE PROVIDED TO THE CITY BEFORE ANY ROUGH GRADING ON THE SITE CAN OCCUR, SERVICING CAN COMMENCE, OR BUILDING PERMIT CAN BE ISSUED. THE GRADING CONSULTANT MUST CONFIRM THAT THE TREE PROTECTION PLAN CONFORMS TO THE LOT GRADING CONTROL PLAN BEFORE THESE PLANS ARE APPROVED BY THE PLANNING DIVISION.
8. THE CITY FOREST CONSERVATION BY-LAW OFFICER WILL ALSO CHECK THE SITE DURING THE CONSTRUCTION PERIOD.
9. FOR SILT FENCING DETAILS REFER TO EROSION AND SEDIMENT CONTROL PLAN BY IBI Group.
10. FOR SERVICING AND GRADING INFORMATION, REFER TO DRAWINGS BY IBI Group.
- 11.

Tree #	Botanical Name	Common Name	Stems	DBH	Crown Dia	Health	Structure	Environment	Recommendations
				mm	M				
01	Acer species	Maple	1	150	12	Good	Very Good	Dominant	Remove
02	Acer pseudoplatanus	Sycamore Maple	1	600	12	Good	Good	Dominant	Remove
03	Picea princeps glauca	Blue Spruce	1	350	5	Fair-Good	Good	Dominant	Remove
04	Quercus rubra	English Oak	1	350	10	Good	Very Good	Dominant	Remove
05	Magnolia acuminata	Cucumber Tree	1	125	2	Very Good	Good	Dominant	Remove
06	Juniper species	Upright Juniper	2		2	Very good	Very Good	Dominant	Remove
07	Juniper species	Upright Juniper	2		2	Very good	Very Good	Dominant	Remove
08	Juniper species	Upright Juniper	2		2	Very good	Very Good	Dominant	Remove
09	Juniper species	Upright Juniper	2		2	Very good	Very Good	Dominant	Remove
10	Acer palmatum	Siberian Maple	1	150		Good	Good	Dominant	Remove
11	Prunus virginiana Schuecht	Schubert's Yew	1	500	7	Very good	Very Good	Protect in Place	
12	Syringa reticulata 'Ivory Silk'	Ivory Silk Tree Lilac	1	180	4	Fair-Good	Fair	Dominant	Protect in Place
13	Syringa reticulata 'Schubertiana'	Schubert's Yew	1	180	4	Fair-Good	Fair	Dominant	Protect in Place
14	Thuja occidentalis	Arborvitae	1	350	8	Fair-Good	Fair	Co-Dominant	Remove
15	Thuja occidentalis	Arborvitae	1	350	8	Fair-Good	Fair	Co-Dominant	Remove
16	Quercus rubra 'Fastigiata'	Pyramidal Oak	1	450	4	Fair-Poor	Poor	Co-Dominant	Remove
17	Prunus species	Cherry	4	150-300	4	Fair-Good	Good	Dominant	Remove
18	Prunus species	Plum/Cherry	1	75	2	Good	Good	Co-Dominant	Remove
19	Quercus rubra	Red Oak	2	150	4	Good	Very Good	Co-Dominant	Remove
20	Gymnocladia dioica	Railroad Cholla Tree	1	150	2	Fair-Good	Fair-Good	Dominant	Remove
21	Quercus rubra	English Oak	2	1100	20	Fair-Good	Good	Dominant	Remove
22	Quercus rubra	Red Oak	2	150	4	Very good	Very Good	Dominant	Remove
23	Quercus rubra	Red Oak	3	150	3	Very good	Good	Dominant	Remove
24	Acer saccharinum	Silver Maple	1	750	20	Fair-Good	Fair	Dominant	Remove
25	Liquidambar styraciflua	Tulip Tree	1	750	4	Very good	Very Good	Dominant	Remove
26	Picea abies	Norway Spruce	1	350	6	Very good	Very Good	Dominant	Remove
27	Acer saccharum	Sugar Maple	1	250	7	Good	Good	Dominant	Remove



Legend



GENERAL NOTES:

1. DRAWINGS NOT TO BE USED FOR CONSTRUCTION UNLESS AUTHORIZED BY THE LANDSCAPE ARCHITECT
2. CONTRACTOR SHALL REPORT ANY DISCREPANCIES BETWEEN THE DRAWINGS AND SITE CONDITIONS PRIOR TO COMMENCEMENT OF THE WORK
3. ALL UTILITY LOCATES ARE THE RESPONSIBILITY OF THE CONTRACTOR. HAND DIG WITHIN THE LIMITS RECOMMENDED BY THE SERVICE UTILITY. UTILITY CONFLICTS WITH PROPOSED TREE LOCATIONS MUST BE REPORTED IMMEDIATELY TO THE LANDSCAPE ARCHITECT
4. BASE DRAWING PROVIDED BY SRM ARCHITECTS.
5. FOR GRADING INFORMATION REFER TO DRAWING BY CIVIL CONSULTANTS. FOR SERVICING INFORMATION REFER TO DRAWINGS BY CIVIL CONSULTANTS.
6. LANDSCAPE DRAWINGS SHOW ENGINEERING INFORMATION FOR DESIGN PURPOSES ONLY. DO NOT CONSTRUCT ENGINEERING WORKS FROM THESE DRAWINGS.

TREE MANAGEMENT PLAN

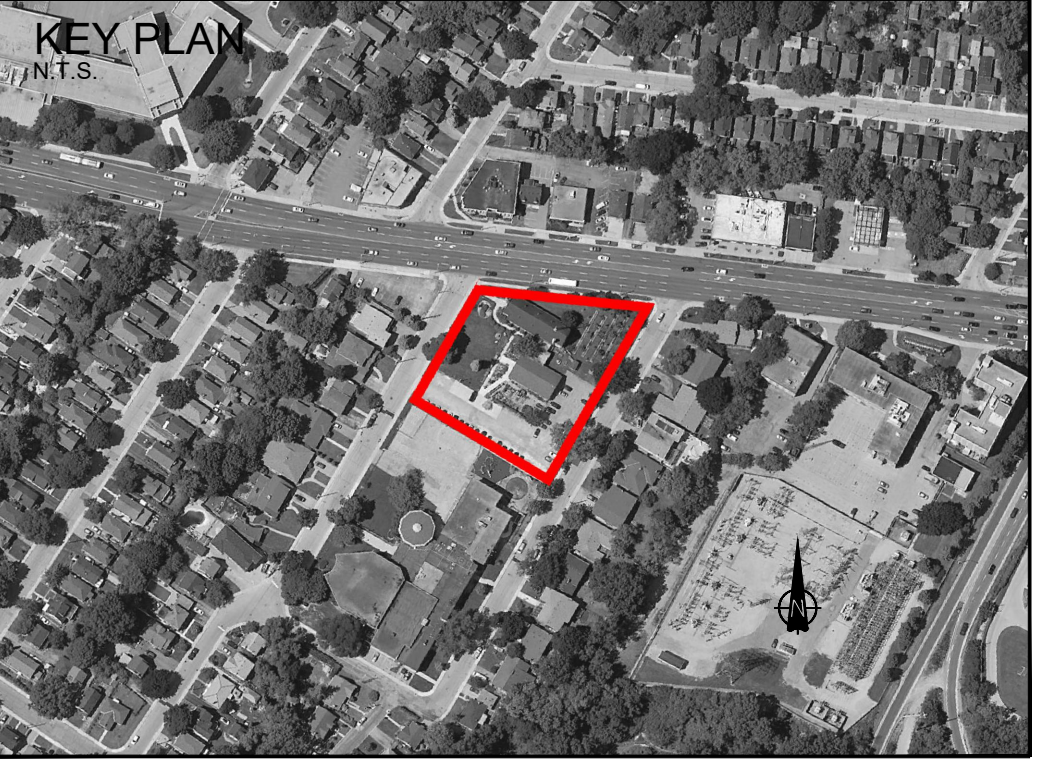
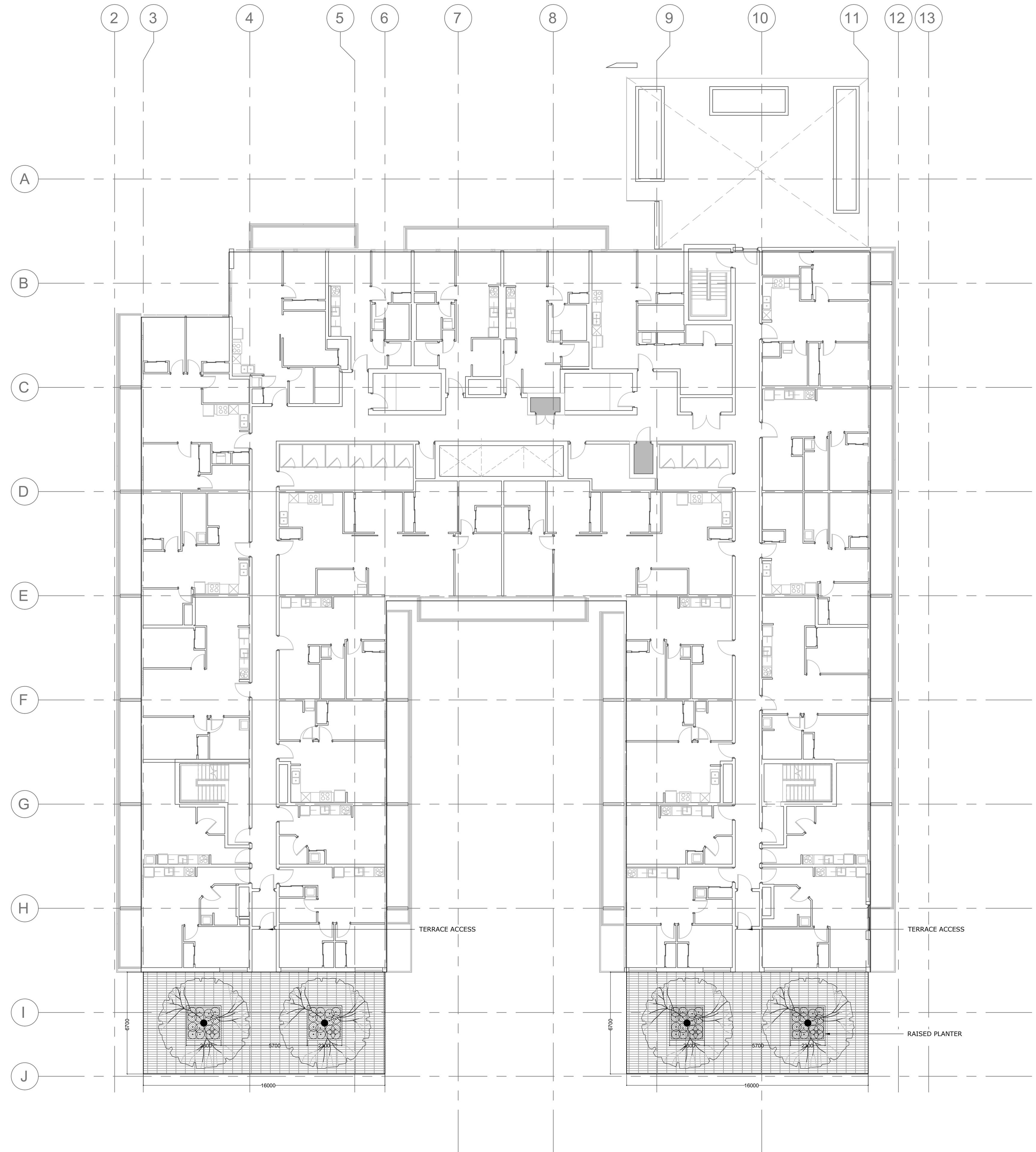
1107 MAIN ST.W.
HAMILTON, ONTARIO

ISSUED FOR REVIEW, NOT
FOR CONSTRUCTION.

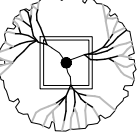
[illegible]


	
201-72 Victoria Street South Kitchener, Ontario N2G 4Y9 T: 519 589 8801 F: 519 589 8843	152 Locke Street South, Suite 200 Hamilton, Ontario L8P 4A8 T: 905 472 7477
www.gspgroup.ca	
Date: Oct 25th, 2019 Scale: 1/200	Drawn By: CZ Drawing No.: 10215

0.0



Legend

 PROPOSED TREES


 ROOFTOP PAVER TILES TYPE

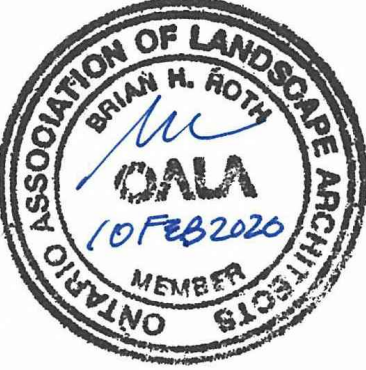
GENERAL NOTES:

1. DRAWINGS NOT TO BE USED FOR CONSTRUCTION UNLESS AUTHORIZED BY THE LANDSCAPE ARCHITECT
2. CONTRACTOR SHALL REPORT ANY DISCREPANCIES BETWEEN THE DRAWINGS AND SITE CONDITIONS PRIOR TO COMMENCEMENT OF THE WORK
3. ALL UTILITY LOCATES ARE THE RESPONSIBILITY OF THE CONTRACTOR. HAND DIG WITHIN THE LIMITS RECOMMENDED BY THE SERVICE UTILITY. UTILITY CONFLICTS WITH PROPOSED TREE LOCATIONS MUST BE REPORTED IMMEDIATELY TO THE LANDSCAPE ARCHITECT
4. BASE DRAWING PROVIDED BY SRM ARCHITECTS.
5. FOR GRADING INFORMATION REFER TO DRAWING BY CIVIL CONSULTANTS. FOR SERVICING INFORMATION REFER TO DRAWINGS BY CIVIL CONSULTANTS.
6. LANDSCAPE DRAWINGS SHOW ENGINEERING INFORMATION FOR DESIGN PURPOSES ONLY. DO NOT CONSTRUCT ENGINEERING WORKS FROM THESE DRAWINGS.

LANDSCAPE PLAN
LEVEL 8
1107 MAIN ST.W.
HAMILTON, ONTARIO


ISSUED FOR REVIEW, NOT FOR CONSTRUCTION.





DATE	ISSUE	BY
/19	Issued for Review	SDK
Jan 24th/20	Issued for Review	LM
Feb 10th/20	Issued for Rezoning	LM

DATE	REVISIONS	BY



251-72 Victoria Street South
K9P 1K6, Ontario L8N 4P5
T 519 889 8883
F 519 889 8843

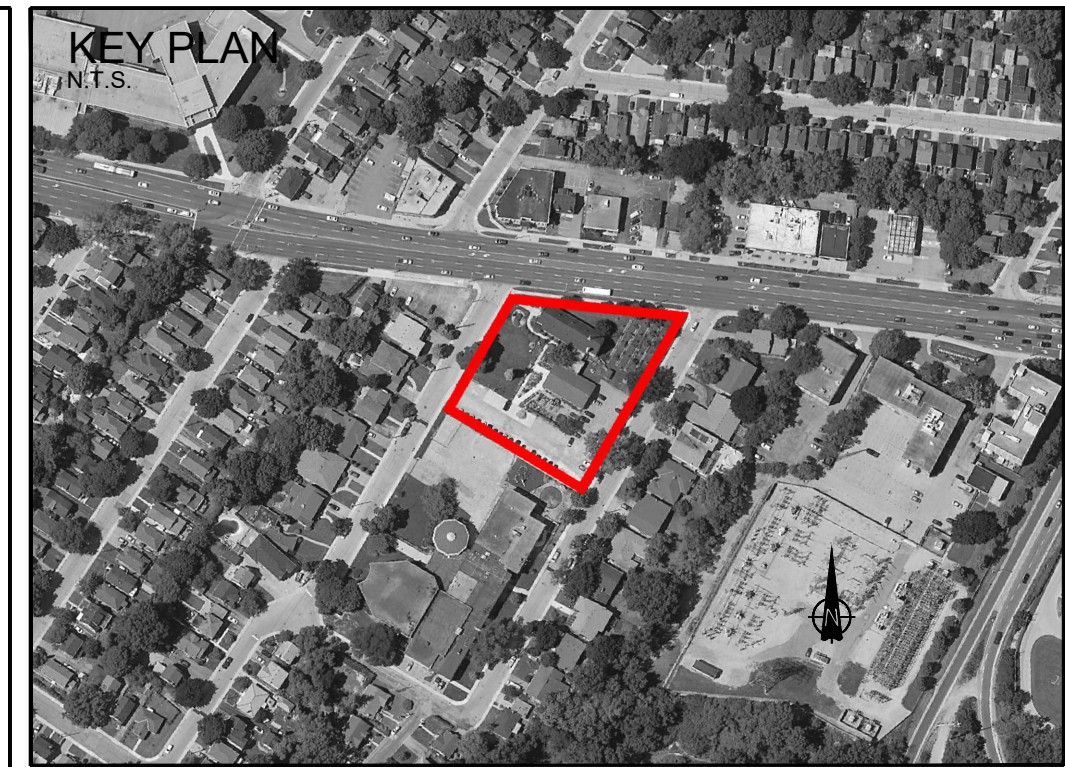
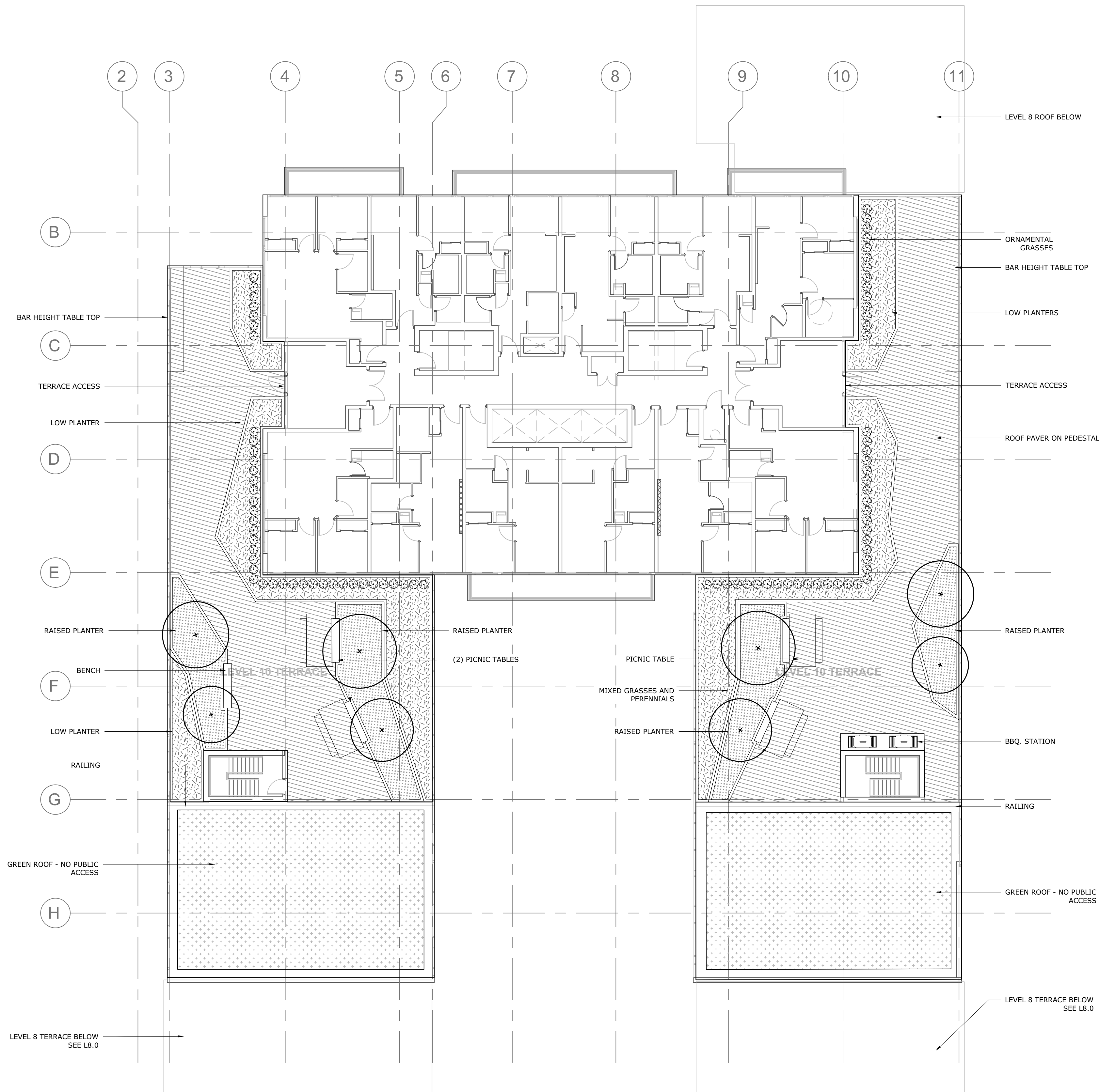
102 Locke Street South, Suite 200
Hamilton, Ontario L8N 4P5
T 905 972 7477
F 905 972 7477

www.gspgroup.ca

Date: FEB 6, 2020
Scale: 1:150

Drawn By: SDK
Project No.: 19215

0.87



Legend


- PROPOSED TREES
- ROOFTOP PAVER TILES TYPE
- PROPOSED RAISED PLANTER
- PROPOSED LOW PLANTER

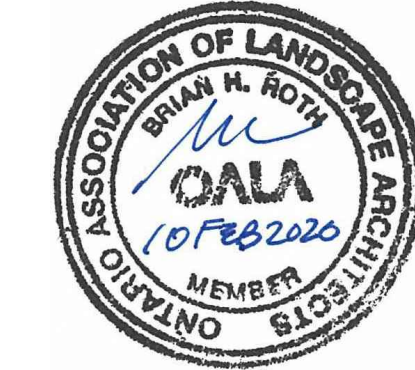
GENERAL NOTES:

- DRAWINGS NOT TO BE USED FOR CONSTRUCTION UNLESS AUTHORIZED BY THE LANDSCAPE ARCHITECT
- CONTRACTOR SHALL REPORT ANY DISCREPANCIES BETWEEN THE DRAWINGS AND SITE CONDITIONS PRIOR TO COMMENCEMENT OF THE WORK
- ALL UTILITY LOCATES ARE THE RESPONSIBILITY OF THE CONTRACTOR. HAND DIG WITHIN THE LIMITS RECOMMENDED BY THE SERVICE UTILITY. UTILITY CONFLICTS WITH PROPOSED TREE LOCATIONS MUST BE REPORTED IMMEDIATELY TO THE LANDSCAPE ARCHITECT
- BASE DRAWING PROVIDED BY SRM ARCHITECTS.
- FOR GRADING INFORMATION REFER TO DRAWING BY CIVIL CONSULTANTS. FOR SERVICING INFORMATION REFER TO DRAWINGS BY CIVIL CONSULTANTS.
- LANDSCAPE DRAWINGS SHOW ENGINEERING INFORMATION FOR DESIGN PURPOSES ONLY. DO NOT CONSTRUCT ENGINEERING WORKS FROM THESE DRAWINGS.

LANDSCAPE PLAN
LEVEL 10
1107 MAIN ST.W.
HAMILTON, ONTARIO


ISSUED FOR REVIEW, NOT FOR CONSTRUCTION.





DATE	ISSUE	BY
Oct 18th /19	Issued for Review	SDK
Oct 25th /19	Issued for Review	SDK
Nov 25th /19	Issued for Review	SDK
Jan 24th /20	Issued for Review	LM
Jan 28th /20	Issued for Review	LM
Feb 10th /20	Issued for Rezoning	LM

DATE	REVISIONS	BY



201-72 Victoria Street South
K9P 1G5, Ontario, Canada
T 519 888 8883
F 519 888 8883

102 Locke Street South, Suite 200
Hamilton, Ontario L8P 4A8
T 905 572 7477
F 905 572 7477

www.gspgroup.ca

Date: FEB 6, 2020
Scale: 1:150

Drawn By: SDK, LM
Project No.: 19215

L10.0